

Ports of **NORMANDY**

Caen-Ouistreham // // Cherbourg // // Dieppe

▶ **DISCOVER**

CHERBOURG

DIEPPE

● CAEN

Effective governance

MRE: a policy priority

At the heart of the market

Easy access for shipping

Solid, deep quays

A unique space

Powerful regional ecosystem

Ground and quayside policy

Multimodal links

Port facilities

Already using our services

PLUG IN HERE

PLAY OFFSHORE



Effective governance

WHO ARE WE ?

**A PORT GOVERNED BY 7
RESPONSIVE LOCAL
AUTHORITIES**



**ORGANISATION
CHART**

OUR ROLE

WE OWN 3 PORTS
Cherbourg
Caen-Ouistreham
Dieppe

4 MISSIONS

Guarantee access for shipping
Develop the ports
Manage land in Cherbourg
Stimulate port communities



**CAEN
OUISTREHAM**



CHERBOURG



DIEPPE

WHO OPERATES ?

CHERBOURG PORT
Equipment
Dockers
Safety & security

*- Ports of Normandy (PoN)
majority shareholder of
delegated authority
in Cherbourg*

*- Stevedores are responsible
for loading/unloading ships.*

*- Contracted to
shipping lines.*



**CHERBOURG
Port**

© Ports de **NORMANDIE**



MRE: a policy priority

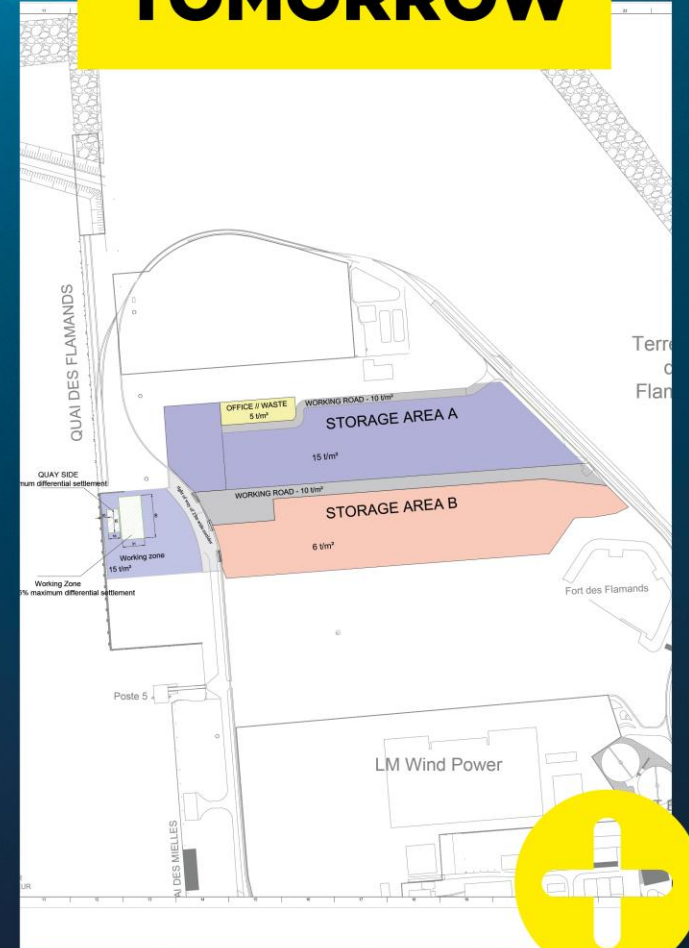
YESTERDAY



TODAY



TOMORROW



At the heart of the market

OFFSHORE
windfarm projects
under development
on the French,
Ireland and United
Kingdom
coastlines by 2030



▷ Positioning across the whole value chain :

Producing
Logistics
Maintenance

▷ 10 GW generated by projects within 250-nautical mile radius by 2030.

▷ Multi-technology positioning : bottom-fixed wind turbines, marine turbines, floating turbines, tidal current turbine.



Easy access for shipping

Minimum 11.7 m channel depth
Little need for dredging
24/7 access
No restrictions (bridges, locks, etc.)
Minimum 300 m passage
Quick entry/exit
Limited interface with other activities



**MAP OF THE
ROADSTEAD**



CHANNEL BATHYMETRY



Solid, deep quays

POSSIBLE QUAYSIDE JACKING

up to a ground pressure of 90T / m²



ROADSTED
BATHYMLETRY



WEATHER DATA

QUAIS DES FLAMANDS



Length: 680 m

Bearing capacity: 5 and 15 T/m²

Depth: 12.5 to 14.5 m



A unique space



PORT MAP



**Undivided 80-ha
land area**



**An outstanding expanse
of water including 360-ha
controlled area
(wet storage possible)**



**Adjacent industrial
estates to support the
port activity, including
20,000 m of covered
areas**



Low-compressibility soil



SOIL SURVEY



ROADSTED
BATHYMETRY



A powerful regional ecosystem

Construction of the most complex objects in the world



Production of the world's longest turbine blades



Cherbourg + Caen-Ouistreham + Dieppe : complementary, unified port facilities.

Real estate financing solutions

**PORTS OF NORMANDY,
A MEMBER OF**

**Wind^o
EUROPE**

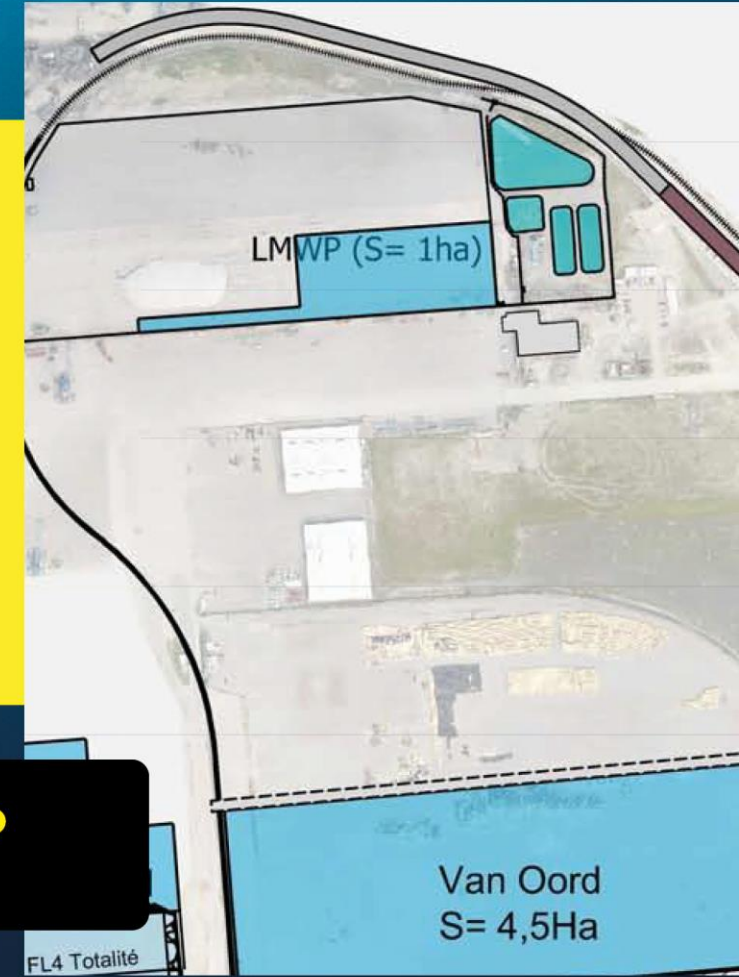


Ground and quayside policy

- ▷ **Visibility on land availability**
- ▷ **Adaptable land, including quayside locations, open for reservation**
- ▷ **Quayside access policy geared to MRE**



**PORT LAND
USE PLAN**



Multimodal links



Direct dual carriageway link, bypassing the town, for transport of loads up to 170 T

Rail connection usable

Maritime links to UK and Ireland



Port facilities

▷ Range of port equipment, including reachstackers, cherrypickers, loaders and tanks

▷ Office space: leases in the port or installation of offices on your plot

▷ 100T / 60T cranes
Outside crane rental possible



ON-SITE
OFFICES



CHANNEL
BATHYMETRY



EQUIPMENT LIST



Already using our services

Boskalis :
Fécamp
2022

Storage of quarry materials,
scour protection system

Van Oord :
Saint
Brieuc
OWF

2021-2022, pin piles
marshalling port

CMN/Hydroquest
Paimpol-Bréhat
2019-2021

Loading/unloading and
storage of a marine turbine
and its foundations

EDF/SGRE :
Fécamp
2022-2023

Assembly hub

OW :
Le Tréport
OWF
2025-2045

Maintenance base

EDF :
Courseulles
OWF
2022-2042

Maintenance base

GE,
LMWP

Production and storage
of Halliade X, the world's
longest turbine blades
built in Cherbourg

SAIPEM :
Courseulles
OWF
2022-2023

Storage quarry matériel
& casing





YESTERDAY

**Ports of
Normandy :
pioneer in MRE**

**100m euros invested
since 2015: the go-to
French port for MRE.**



TODAY

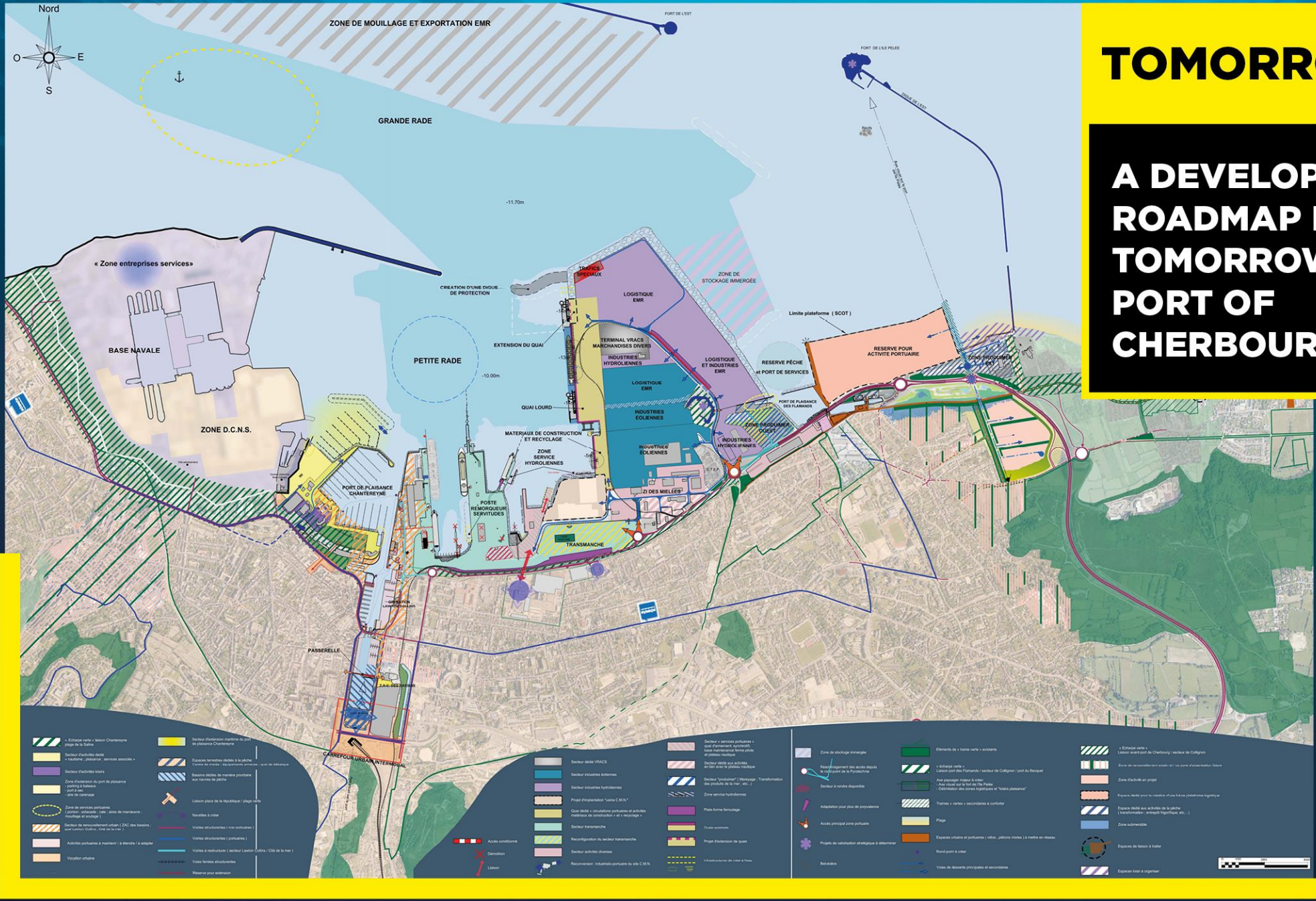
2022 : WE ARE PURSUING, ADAPTING AND STRENGTHENING OUR OFFER.

Installation of shipping facilities at the Ouistreham maintenance base. Local reinforcement of the Cherbourg heavy-lift quay to over 27 T/m².



TOMORROW

A DEVELOPMENT ROADMAP FOR TOMORROW'S PORT OF CHERBOURG

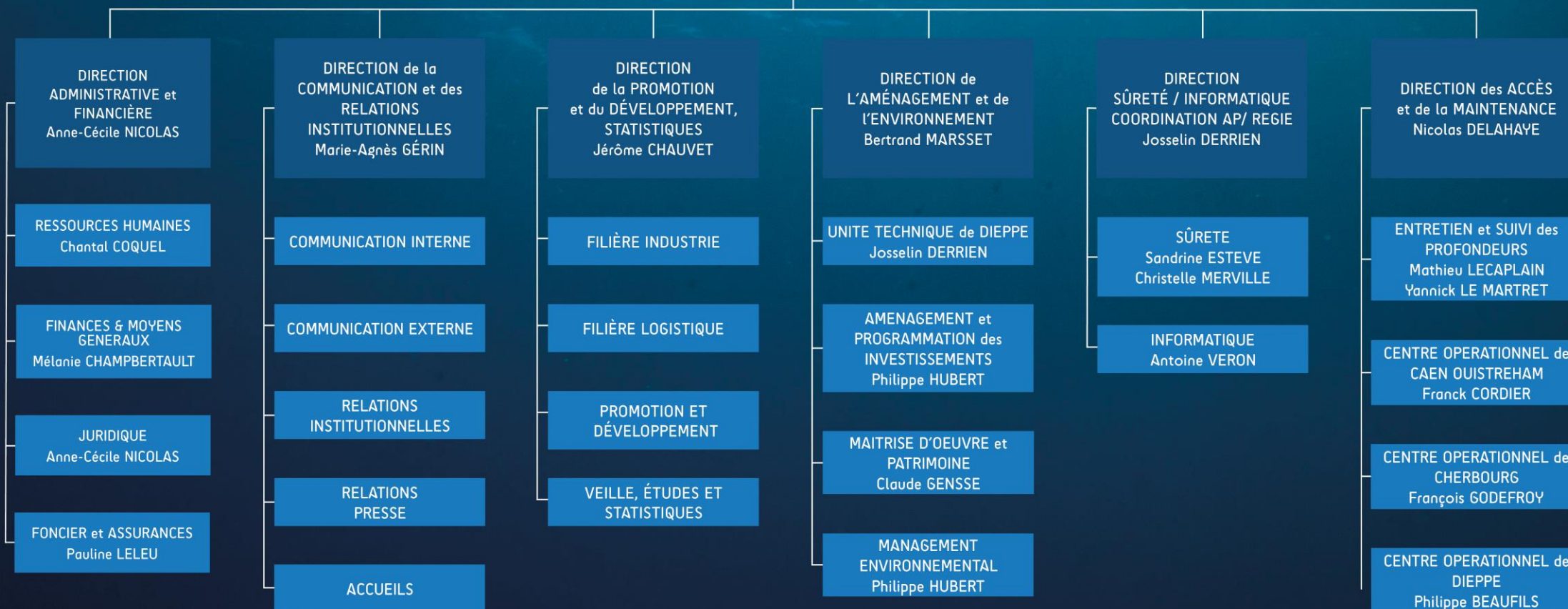


**ORGANISATION
SYNDICAT MIXTE
PORTS DE NORMANDIE
SEPTEMBER 2021**

COMITE SYNDICAL
Président
Hervé MORIN

DIRECTEUR GÉNÉRAL
Philippe DEISS
DIRECTEUR ADJOINT
Bertrand MARSSET

CAPITAINERIES
PORT de
CAEN-QUISTREHAM
Poste vacant
PORT de CHERBOURG
François MONTAGNE
PORT de DIEPPE
Flavien MONTCHO





**CAEN
OUISTREHAM**



+ DIEPPE

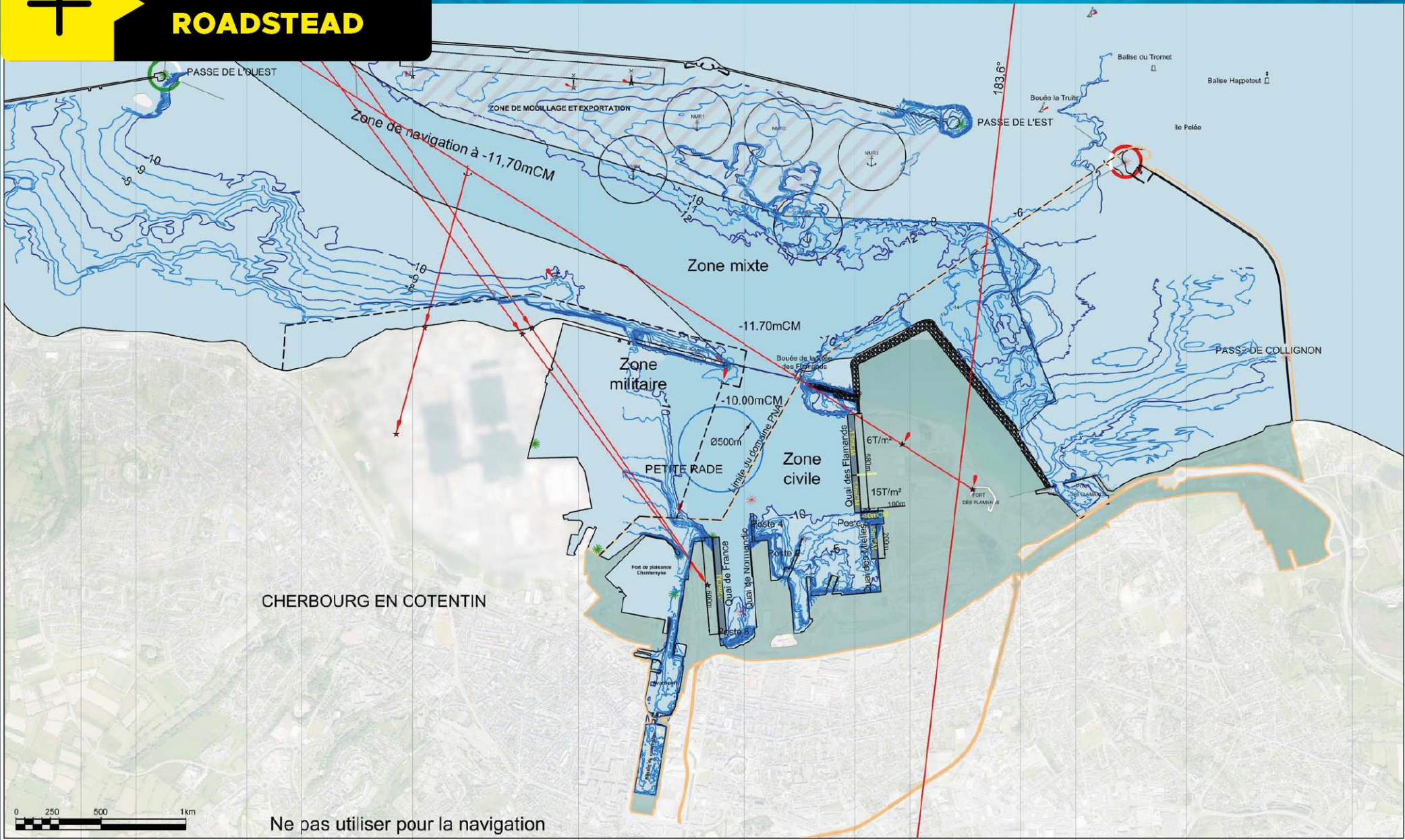




CHERBOURG



MAP OF THE ROADSTEAD



 DOWNLOAD



PORT LAND USE PLAN

DOWNLOAD



Légende

■	Rouge : Espace réservé - contrat signé Red : Area booked - Rental contract signed
■	Orange : Espace en cours de réservation. Des documents pré-contactuels ont été signés / la convention d'occupation est en cours de rédaction Orange : Area is being reserved. Pre-contact documents have been signed / occupation agreement is being drafted
■	Jaune : Le port a été sollicité, mais la demande n'a pas été confirmée à ce stade Yellow : Port has been approached, but the request has not been confirmed at this stage
■	Vert : Espace disponible Green : Area available

Ports de NORMANDIE
Direction de l'Aménagement et de l'Entretien

Date : 03/11/2021

Echelle : 1/6000
Format : A3

Port de Cherbourg

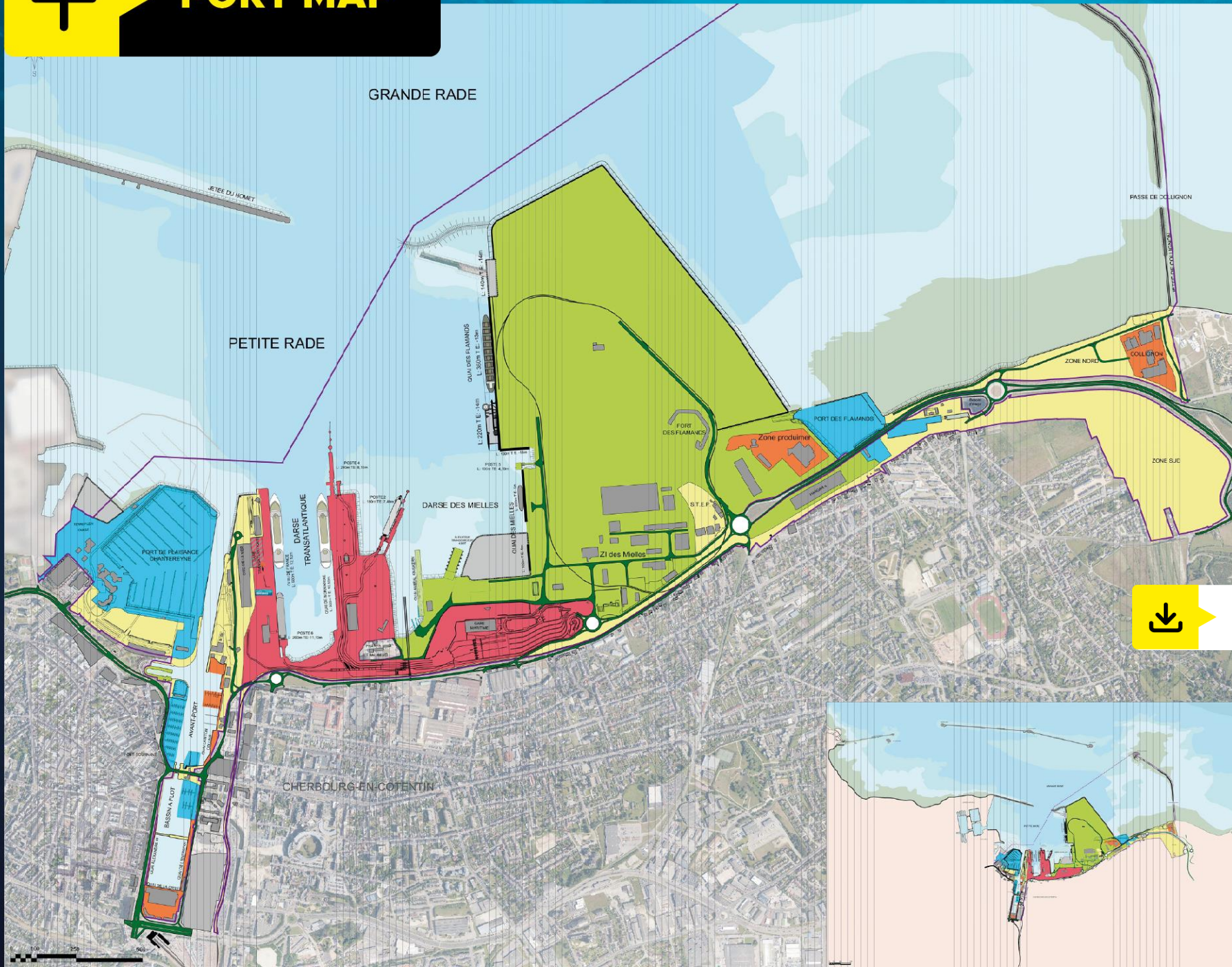
Occupation EMR / Ground occupation

Novembre 2021 à Décembre 2021
 November 2021 to December 2021

Référence :
Plan de l'occupation du sol (POS) de la commune de Cherbourg-Mer

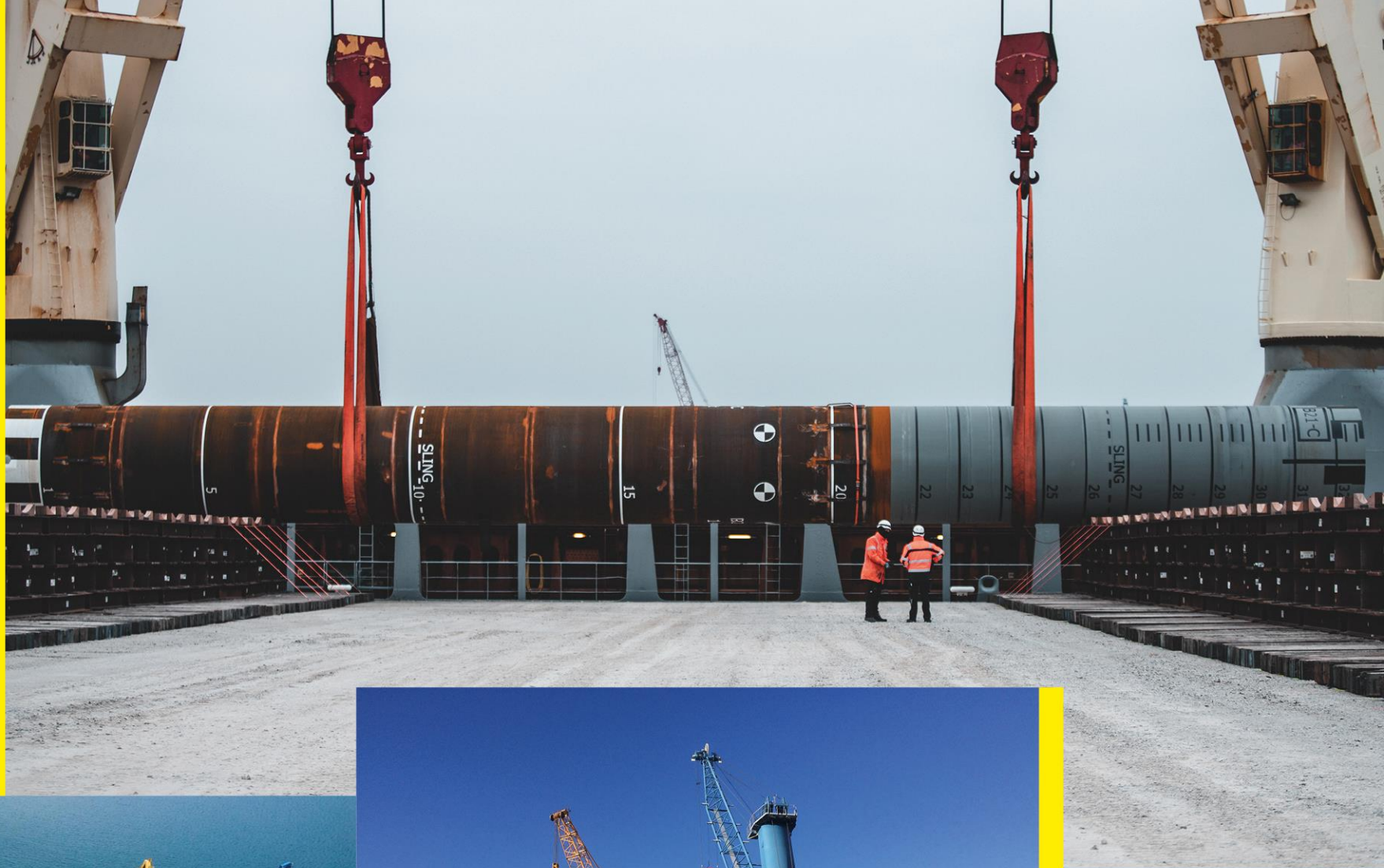


+ **PORT MAP**



↓ **DOWNLOAD**







**ON-SITE
OFFICES**

